

Directions

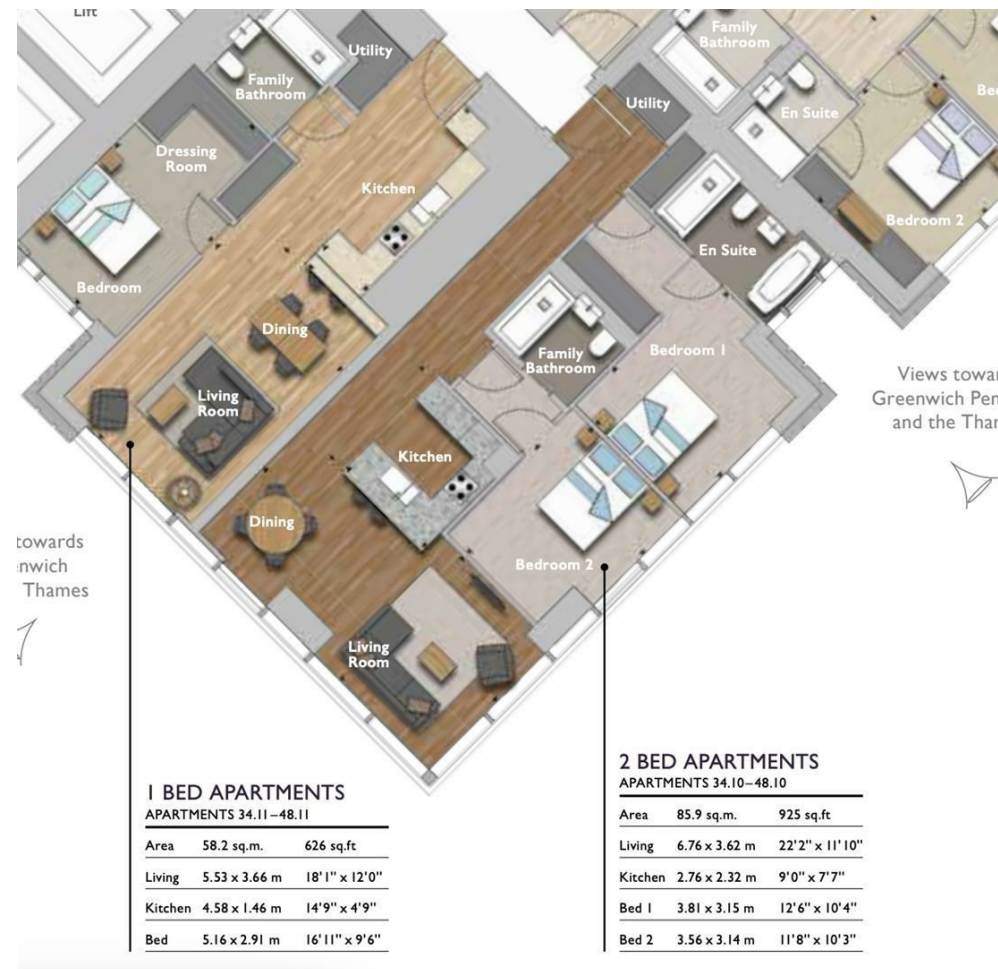
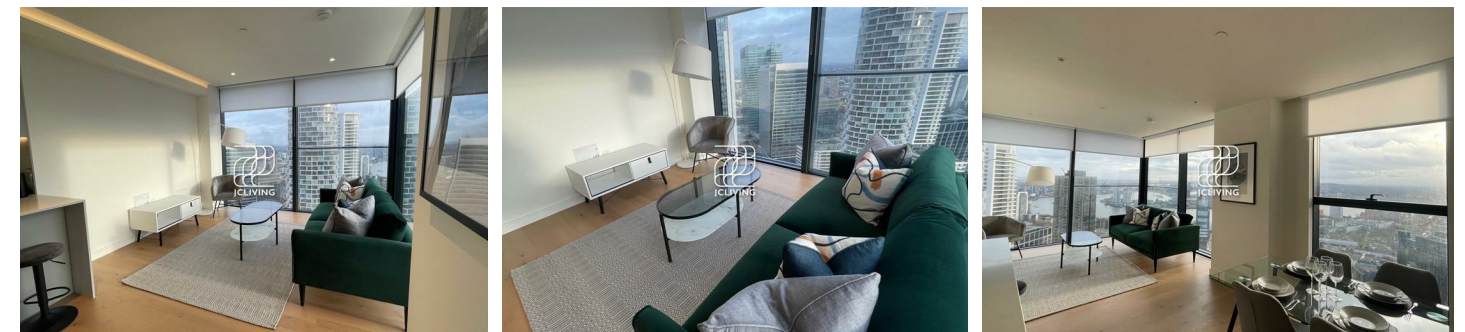
Viewings

Viewings by arrangement only. Call 02033696888 to make an appointment.

EPC Rating

B

Energy Efficiency Rating		Current	Potential
Very energy efficient - lower running costs			
(92 plus) A			
(81-91) B		84	84
(69-80) C			
(55-68) D			
(39-54) E			
(21-38) F			
(1-20) G			
Not energy efficient - higher running costs			
England & Wales		EU Directive 2002/91/EC	



CN351 Apartment 3810, Hampton Tower 75 Marsh Wall, London, E14

£923 Per Week

- 1001 square ft
- New build
- Residents gym
- Residents spa
- Screening, dining and karaoke rooms
- Co-working spaces
- One of the tallest residential buildings in Europe
- Residents swimming pool
- Residents spa
- Bamboo sanctuary complete with terrace hot tubs
- Excellent transport links

Hampton Tower 75 Marsh Wall, London E14 9GX

*** Please quote reference JC2306102 when contacting the agency ***

Nestled in the vibrant area of Canary Wharf, this exquisite new build flat offers a modern lifestyle in a prime location. Spanning an impressive 1,001 square feet, the property features two well-appointed bedrooms and two stylish bathrooms, making it ideal for both professionals and families alike.

Being 68 storeys high, Hampton Tower is one of the tallest residential buildings in Europe.

Constructed in 2021, this flat boasts contemporary design and high-quality finishes throughout. The spacious reception room provides a welcoming atmosphere, perfect for relaxation or entertaining guests. Residents will enjoy an array of exceptional amenities, including a luxurious swimming pool, a state-of-the-art gym, and a rejuvenating spa, all designed to enhance your living experience.

For those who appreciate socialising, the property offers private dining, screening, gaming, and karaoke rooms, ensuring there is always something to enjoy with friends and neighbours. Additionally, the bamboo sanctuary, complete with terrace hot tubs, provides a serene escape from the hustle and bustle of city life.



Council Tax Band:

